



Factsheet A.2.2: Sap (Slovakia, SK032)

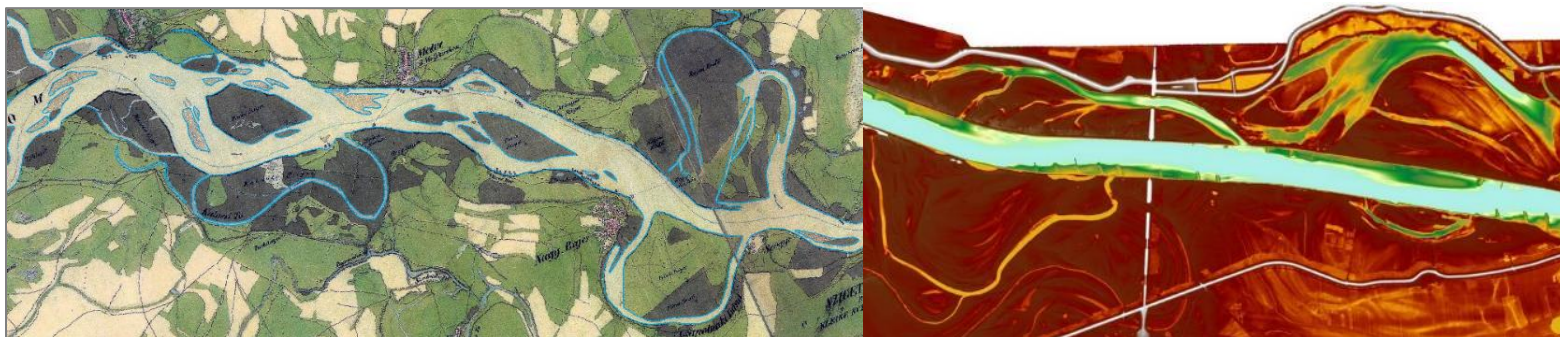
Location: left bank of the Danube at river km 1807,6 – 1806,9

Responsible Partner: BROZ

Background: The riverbed of the Danube at Sap belonged to the most dynamic sections of the Danube, with massive sedimentation of the larger gravel fractions. During the 20th century main straight artificial channel and a system of smaller parallel river branches existed.

During 1980-ies all five inflows of the system were closed by massive embankments and the upper parts of the riverbeds were filled up with gravel. Since that intervention the flowing water disappeared in the system, sedimentation of fine material started in the riverbeds and destruction of fluvial habitat took place.

In 2012, BROZ initiated the first pilot restoration action. This action was evaluated as highly effective: rheophile fish species returned, on the restored gravel banks natural rejuvenation of willows and poplars occurs, as initial state of 91E0 habitat.



Objective: A.2.2 prepares the restoration of one former river branch, now closed at the intake. New intake structure within the embankment of the main channel of the Danube will allow to pass the water for most of the year into the river branch. Material filling up the upper part of the former riverbed will be removed. One of the former islands will be restored, on land access to the island will be possible only during low water periods. It is expected that local sedimentation at the banks of the re-opened river branch will provide area for natural formation of new 91E0* habitat. Increased infiltration of ground water will improve the conditions for the adjacent floodplain forests.

