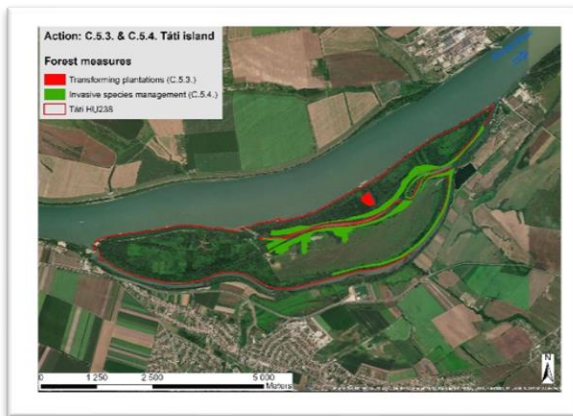


Factsheet A.4.5 & A.4.6 TÁTI-szigetek (Hungary, HU238)

Location: right bank of the Danube at river km 1 725

Responsible Partner: Duna-Ipoly National Park Directorate (DINPI)

Background: The total project area (56 ha) is under the trusteeship rights of DINPD. Target invasive species are mainly *Acer negundo*, *Fraxinus pennsylvanica*, *Amorpha fruticosa* and occasionally *Vitis riparia* and *Acer saccharinum*. Total average rate of coverage of these species is between 20-40%. Probably the biggest technical challenge is that most parts of the area are difficult to access as they are located on the riverbanks (see the target area on map and picture below)



Objectives:

- Elimination of invasive tree species from the entire 56 ha, primarily implemented by mechanical measures, and if necessary, follow-up treatments will be done by delicate use of chemicals.
- App. 8 ha of this 56 ha area will be partially renewed by planting indigenous tree species (e.g. oak, ash, elm, poplar, etc.).
- Full transformation of a hybrid poplar stand of 2,6 ha. The forest stands involved: Esztergom 87/G, 87/B. Methodology: cutting down and transporting hybrid poplars (app. 5-10% of trees will be left for shading and future dead wood). Planting indigenous tree species (e.g. oak, ash, elm, poplar, etc.) without pre-ploughing the area and then treatment for 4 years.
- Pre- and post-monitoring of vegetation, including the initial coverage rate of invasive tree species in the project area, composition of the 91E0* forests concerned and the results of field works carried out during the project.